

EVENT Line-Up

Redfish Nation, SEC, NCAA, FLW Outdoors, and Offshore Super Series Powerboat Racing are just a few of the sports organizations who have hosted events in Gulf Shores and Orange Beach over the past few years. The resort area also plays host to various high school, college and professional competitions, events and tournaments each year. Many events return year after year to compete and enjoy first-class sporting facilities located in a resort setting. From the beach to the baseball fields, Gulf Shores and Orange Beach have the facilities necessary to accommodate most sporting events.

2008

Alabama High School Athletic Association
4-5-6A State Track Championship

American Riviera Classic Volleyball Tournament

APBA Watercross Nationals

Brett Robinson Alabama Coastal Triathlon

Corona Light EVP Volleyball Tour

Dolphin Classic Softball Tournament

Gulf Coast Classic Volleyball Tournament

Hurricane Taekwondo Tournament

IFA Redfish Tour Gulf Division
Fishing Tournament

Island Cup Soccer

Kaiser Realty Coastal 1/2 Marathon & 5K

NAIA Gulf Coast Invitational

National Multiple Sclerosis 2008 Bicycle Ride
Nike Gulf Coast Baseball & Softball Tournament

NSA Summer's End Softball Tournament

Orange Beach Invitational Softball

Perdido Bay Futbol Flora-Bama Showcase

SEC Women's Soccer Championship

Senior & Super Senior Combo
Tennis Championships

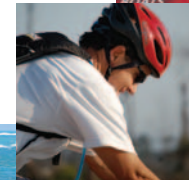
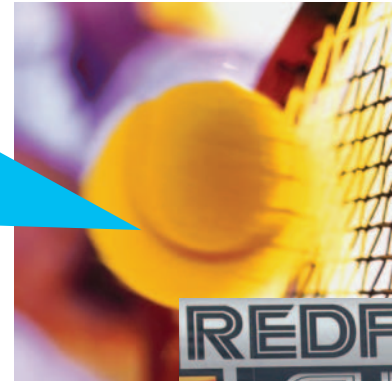
Southeastern Junior Golf Classic

USTA State Combo Double Tennis Championships

Wal-Mart FLW Kingfish Tour

Youth Basketball of America Gulf Coast Challenge

Thunder on the Gulf - Off Shore Super Series
Powerboat racing



2007

Alabama High School Athletic Association 4-5-6A
State Track Championship

Alabama Coastal Triathlon

Kaiser Realty Turkey Day Classic

BMW, STA Combo Doubles Tournament

Southern Turf Nurseries Cornelius Bennett
Golf Classic

AC Celebrity Weekend

NCAA Division II Women's Soccer Championship

NCAA Division II Men's Soccer Championship

Nike Gulf Coast Baseball Classic

Oh Boy! Oberto Redfish Cup All Stars
Mid-Season Bash

SEC Women's Soccer Championship

Southeastern Junior Golf Tour

Thunder on the Gulf - Off-Shore Super Series
Powerboat racing



Wal-Mart FLW Kingfish
Championship Tournament

Wal-Mart FLW Redfish
Championship Tournament

2007 Dolphin Classic Softball Tournament

2007 Orange Beach Invitational
Softball Tournament



Contact the Alabama Gulf Coast Sports
Commission at 1-800-982-8562
for further information.

GOLF at the Gulf

CRAFT FARMS

COTTON CREEK AT CRAFT FARMS

Cotton Creek offers a unique setting combining the mystique of golf legend Arnold Palmer with Southern hospitality and charm. True to its Palmer design, as laid out to challenge rather than intimidate, with numerous risk/reward opportunities throughout.

Designer: Arnold Palmer

Practice Facilities: Yes

Complete locker room, clubhouse, restaurant and bar facilities.

CYPRESS BEND AT CRAFT FARMS

This spectacular 18-hole layout designed by Arnold Palmer was recently rated the "Number one most playable new course in the U.S." by Golf Digest magazine. Featuring staggered tee boxes, sprawling bunkers, top quality putting surfaces and year-round lush and green conditions, Cypress Bend is an architectural masterpiece.

Designer: Arnold Palmer

Practice Facilities: Yes

Complete locker room, clubhouse, restaurant and bar facilities.

THE WHARF

THE GOLF CLUB OF THE WHARF

After undergoing an extensive renovation in 2005, the course at The Golf Club of The Wharf is the newest addition to the coastal golf courses.

This 18-hole course is the only one in the Gulf Coast region to feature Miniverde greens.

Featuring beautiful fairways, enhanced bunkers and numerous water features, The Golf Club of The Wharf offers a challenging, yet rewarding golfing experience.

Designer: Jay Morrish

Practice Facilities: Yes

Locker room, clubhouse, restaurant and bar facilities to be completed in 2008.

Swing into action in Gulf Shores/Orange Beach! Championship-caliber golfing is just a stroke away at any of the area's renowned courses designed by some of the greatest names in golf—Arnold Palmer, Larry Nelson, Bruce Devlin, Jerry Pate, Robert Von Hagge and Earl Stone. With over 288 holes to play, we've got the best game on the coast.



KIVA DUNES GOLF CLUB

Masterfully designed by former U.S. Open Champion Jerry Pate, Kiva Dunes has become known as "the most glamorous course anywhere on the Gulf Coast" and is consistently ranked among America's Top 100 courses. Kiva Dunes offers spectacular beauty as the course meanders through pristine sand dunes, lakes and natural wildlife.

Designer: Jerry Pate

Practice Facilities: Yes

Complete locker room, clubhouse, restaurant and bar facilities.



PENINSULA GOLF AND RACQUET CLUB

Of all the great coastal golf courses, Earl Stone's creation at Peninsula may be the most unique. This 27-hole masterful course, set on beautiful Mobile Bay, winds through live oaks, cypress and natural vegetation, and features more than 30 lakes and some of the area's largest white-sand bunkers and waste areas.

Designer: Earl Stone

Practice Facilities: Yes

Complete locker room, clubhouse, restaurant and bar facilities.

ORANGE BEACH GOLF CENTER

Pleasure Island's only Par 3 course. The recently redesigned 9-hole links with extended tee boxes for 18-hole play, is filling a niche in the golfing industry of the Alabama Gulf Coast. It is an excellent course for the novice golfer, yet challenging enough for the seasoned golfer to improve short game skills. Each hole offers a unique challenge with coastal landscaping, ponds and lakes and abundant wildlife. The Center offers the only full-service, lighted practice range open daily with self-serve, coin-operated equipment.

Designer: City of Orange Beach

Practice Facilities: Yes – Lighted

Clubhouse, Concession, Club Rentals, Memberships, "Wi Fi" HotSpot



Contact the Alabama Gulf Coast Sports Commission at 1-800-982-8562 for further information.

	PAR	GOLD	BLUE	WHITE	RED	GOLD	BLUE	WHITE	RED	WALKING
	COURSE YARDAGE					SLOPE RATING				
Golf Club of the Wharf	71	6812	6365	5950	5362	121/72.4	119/70.3	116/68.1	111/65.6	YES*?
Cotton Creek at Craft Farms	72	7028	6581	6032	5175	136/74.1	130/72.1	123/69.2	22/70.9	NO
Cypress Bend at Craft Farms	72	6848	6424	5954	5045	127/72.4	122/70.4	112/67.9	121/70.5	NO
Kiva Dunes Golf Club	72	7092	6464	5849	5006	132/73.9	129/70.8	119/67.8	115/68.5	YES
Peninsula Golf & Racquet Club Marsh to Lakes	72	7026	6494	5799	5072	130/73.8	124/70.9	114/67.5	115/68.7	NO
Lakes to Cypress	72	7055	6525	5677	4978	131/74.0	125/71.1	113/66.9	121/96.6	NO
Cypress to Marsh	72	7179	6703	5858	5080	133/74.7	129/72.3	117/68.0	120/70.1	NO
Orange Beach Golf Center	54	N/A	1010	859	N/A	N/A	N/A	N/A	N/A	YES

ORANGE BEACH facilities

ORANGE BEACH SPORTSPLEX

4 SOFTBALL FIELDS (Women)
200' Radius
Variable length bases and pitching
Clay (skinned) infield
Seating for 100 each
Lighted

1 SOFTBALL (Adult)
300' Radius
Variable length bases and pitching
Seating for 100
Lighted

1 BASEBALL FIELD (High School)
300' down lines/355' to center
Seating for 200
Lighted

4 BASEBALL FIELDS (Youth)
250' Radius
Variable length base and pitching
Seating for 100 each
Lighted

Baseball and Softball Fields have complete locker facilities, restrooms and concessions

2 SOCCER/ FOOTBALL FIELDS
75 x 120 yards each
Seating for 1500
Press Box
Lighted

1 MULTI-PURPOSE FIELD
100 x 50 yards
Grass

These fields have complete locker facilities, restrooms and concessions

Anyone for tennis, baseball, football, or soccer? That's a few of the sports available in Orange Beach, Alabama. The Orange Beach Sportsplex has played host to the Southeastern Conference Women's Soccer Tournament and many other major tournaments.



RECREATION CENTER

30,000 Square Feet

1 MULTI-PURPOSE GYMNASIUM
Seating for 480

2 MULTI-PURPOSE ROOMS
1500 Square Feet each
10' Ceilings



AQUATIC CENTER

1 JUNIOR OLYMPIC POOL
Outdoor
6 lane-4' deep
Diving Well and Board
Heated
Seating for 500
Locker room / dressing room /restroom area



TENNIS CENTER

8 MEDIUM SPEED HARD COURTS
Full Service Proshop
Seating for 100
Lighted

All Orange Beach Facilities are Wi-Fi Hot Spots



Contact the Alabama Gulf Coast Sports
Commission at 1-800-982-8562 for
further information.



UNIQUE venues

MARINAS

HOMEPORT MARINA/GULF SHORES

www.homeportmarina.net

- 76 wet slips
- Concrete floating docks
- 30, 50, and 100 amp electrical services
- Phone, cable, and wireless internet
- Valvtect marine gasoline and diesel
- Pump out facilities
- Small Ship's Store providing basic boating needs
- Lucy Buffett's Lulu's Restaurant
- Homeport Yacht Services
- 24 hour security

ZEKE'S MARINA/ORANGE BEACH

www.zekeslanding.com

Zeke's Landing Marina is a six-acre complex located on Cotton Bayou in Orange Beach, Alabama, less than ten minutes by boat from the Gulf of Mexico. The complex features complete marine facilities and is home to Zeke's Charters, the Gulf Coast's largest Charter Fishing Fleet.

- 50 wet slips
- 250 boat dry stack storage facility
- Full-service dock store and fuel station
- 20+ transient slips available
- Island favorite dining spots - casual to fine dining
- Geno's Fresh Catch Grill
- Geno's Dockside Deli
- Down Under Seafood & Oyster Bar
- Zeke's Landing Restaurant

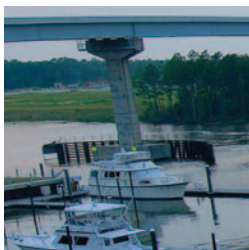
THE WHARF/ORANGE BEACH

www.marina.thewharfal.com

Situated along the famed Intracoastal Waterway between mile markers 158 and 159, The Marina at The Wharf has over 208 public and private boat slips in a well-protected location and a lively, festive environment. The Marina at The Wharf offers dining, shopping, movies and entertainment within walking distance of this state-of-the-art facility. Transient slips are also available.

- 208 public and private wet slips
- Echno-marine floating dock system
- 3 fuel docks - reg/prem/diesel and hi-tech fuels
- On-site pump out facilities \$5
- WiFi, cable TV
- 20, 30, 50, and 100 amp electrical services
- Fishtales Restaurant and Marina Store
- Option of Armada Club membership and access to resort amenities
- Rates starting at \$20 per foot per month
- Transient rates starting at \$2 per foot

Fields and gymnasiums aren't the only options for your event. Think outside the goal box and consider the unique possibilities of our wide variety of venues.



BOAT LAUNCHES

GULF SHORES CANAL PARK/GULF SHORES

50 West Canal Drive
Public boat launch and parking.

GULF SHORES MARINA/GULF SHORES (private marina)

1577 Hwy 180 West (251) 540-2336
Dock store, dry storage, transient, permanent, wet & covered slips, showers, telephones. Marine parts & accessories, private charters available. Tacky Jack's 2 restaurant.

ICC MARINE/GULF SHORES (private marina)

2614 East 2nd Street (251) 968-6558
Dry storage, launch, marine parts, accessories and repairs/service.

BOGGY POINT/ ORANGE BEACH

End of Marina Road

COTTON BAYOU MARINA/ ORANGE BEACH

Hwy. 182 just east of the Hwy. 161 intersection.



OUTDOORS

GULF STATE PARK PAVILION/Gulf Shores

A brand new beach pavilion offering seating for up to 450 people, air-conditioned restrooms, private showers, a snack bar and plenty of parking. Space is available year-round.

GULF SHORES PAVILION/Gulf Shores

Located at Lake Shelby, offering three open-air pavilions, a picnic area and is open year round.

AMPHITHEATER AT THE WHARF/Orange Beach

The Amphitheater at The Wharf, is a 10,000 seat state-of-the-art performance facility with concessions, convenient parking, and two 25-foot jumbo screens.

HUGH BRANYON BACK COUNTRY TRAIL/Orange Beach

7.8 miles of pure nature, perfect for biking and walking. The trails included are Catman Trail, Ridge Trail and the Rosemary Trail.



Contact the Alabama Gulf Coast Sports Commission
at 1-800-982-8562 for further information.

GULF SHORES facilities

JOHNNIE SIMS PARK

2 BASEBALL FIELDS (YOUTH)

200' Radius
60' bases
46' / 50' pitching
Portable Mound
Grass Infield-Tifton 419 Bermuda
Crimson Stone/Clay Baselines
Dugouts
Seating for 150
Lighted

1 SOFTBALL FIELD (YOUTH AND HIGH SCHOOL)

185' Radius
50' / 60' bases
35' / 40' pitching
Grass Infield-Tifton 419 Bermuda
Crimson Stone Infield
Dugouts
Seating for 100
Lighted

1 BASEBALL FIELD (HIGH SCHOOL)

340' to Centerfield
330' Down the Lines
80'/90' Bases
54'/60 1/2' Pitching
Grass Infield-Tifton 419 Bermuda
Seating for 100
Lighted

12 TENNIS COURTS

Hard Surface
Seating for 150
Lighted
Covered Pavilions

2 OUTDOOR BASKETBALL COURTS

Regulation Size
Lighted

SKATE PARK

6500 square feet area
10 Concert Modular Skate Ramps
Designed for beginner through advanced
Concession and restroom building
Picnic tables

Football fields, tennis facilities, softball fields and much more make Gulf Shores the perfect setting for most any sports event or competition. Gulf Shores offers three unique facilities which are well-maintained, beautifully-landscaped and are available for competitions, events, meets and year-round activities.



COMING IN 2008

6 RUBECO COURTS

4 covered
2 open

TENNIS CENTER

5000 square feet state-of-the-art facility
Tennis lounge
Restrooms
Observation deck

GULF SHORES SPORTSPLEX-MULTI-USE FIELD HOUSE

MULTI-USE FIELD HOUSE

2 large multi-purpose rooms
Showers
Restrooms
Dressing room and locker area

1 FOOTBALL FIELD

Regulation Size
Tifton 419 Bermuda
Seating for 3000
Lighted
Press box
Scoreboard
Concessions and Restrooms
on both sides of field

1 BASEBALL FIELD

320' Down Lines/395' to Center
90' Bases/ 60' Pitching
Grass Infield - Tifton 419 Bermuda
Clay/Crimson Stone
Seating for 200
Scoreboard
Dugouts
Concessions, restrooms
and press box

1 SOCCER FIELD

110 yds x 65 yds
Grass - Tifton 419 Bermuda
Scoreboard
Seating for 150
Lighted

1 TRACK

10 Lane straightaway
8 Lane Rubber Track
Long Jump pits
Pole Vault
High Jump
Discus and Shot Put
Full track meet capacity
Seating for 3000
Lighted

1 SOFTBALL FIELD

225' radius
60' bases / 40' pitching
Clay Infield/Crimson Stone
Outfield grass - Tifton 419 Bermuda
Covered Dugouts
Scoreboard
Seating for 100
Lighted



COMING TO SPORTSPLEX IN 2008

5 NEW SOFTBALL FIELDS

300' Radius
Clay Infield-Crimson Stone
Tifton 419 Bermuda Grass
Covered Dugouts
Press Box
Concession
Scoreboard
Seating for 200 each field
Lighted
Shaded Pavilions

Batting Cage
Tournament ready
400 Parking Spaces



DAVID L. BODENHAMER CENTER

1 INDOOR POOL

25 yards/ 200,000 gallons
6 Lane- 4' to 5' depth
Seating for 200
10 ft. Diving Well and Board
Heated
Large locker/dressing room/restroom area

1 GYMNASIUM

Multi-purpose
84' x 50'
Seating for 150
Locker Rooms for Youth and Adults



GULF SHORES HIGH SCHOOL

MULTI-PURPOSE GYMNASIUM

Seating for 1000
2 Practice Football Fields / Unlit

GULF SHORES MIDDLE SCHOOL

MULTI-PURPOSE GYMNASIUM

Seating for 450
1 Practice Soccer Field/Lighted



Contact the Alabama Gulf Coast Sports Commission at 1-800-982-8562 for further information.